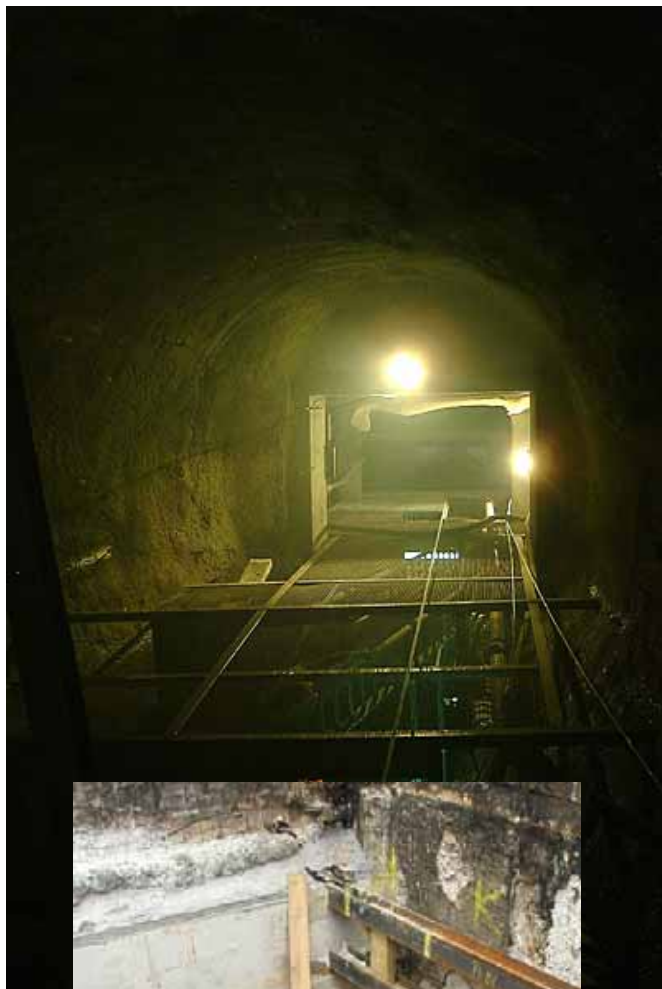




Alan Auld
ENGINEERING

Project Data Sheet - LUL Step Free Access Lift Shafts



London Underground Limited (LUL) are currently upgrading their many sub-surface stations to incorporate access for mobility impaired persons by way of new lift shafts. This programme of works is known as the Step Free Access Programme or SFA.

The Alan Auld Group has been involved in many of these schemes ranging from feasibility studies for tunnel and shaft locations, to design reviews and buildability studies to ensure best value.

In addition, the Engineering sector of the group has been involved in the design of elements for the permanent works, including piles for lift structures and platform canopy steelwork detailing.

During construction, many temporary works schemes have also been prepared:

- Hoardings and barriers
- Excavation support (lift pits and king pile cutting retention)
- Shuttering details
- Underpinning support details
- Heavy propping to platform tunnels to support openings
- Underground chamber temporary works for openings
- Demolition sequencing and Conceptual Design Statement preparation

All of these projects have required documentation and submissions in accordance with the rigorous requirements of LUL and its operating companies, Tubelines and Metronet.

To date, Alan Auld Group have completed the following station projects:

- Green Park Jubilee Line contract 101 - Temporary works
- Brixton - Underpinning and underground temporary works
- Waterloo - Temporary works
- Oakwood - Temporary works & steel detailing
- Finchley Central - Pile design and temporary works
- Hainault - Temporary works and demolition
- Archway - Design review
- Tower Hill - Feasibility Study
- Euston Square - Feasibility Study
- South Kensington - Temporary works planning
- Green Park SFA project - Temporary works
- Ladbroke Grove - Trial pits
- Newbury Park - Trial pits
- Barbican - Trial pits and desk study of records
- Liverpool Street Trial pits and desk study of records